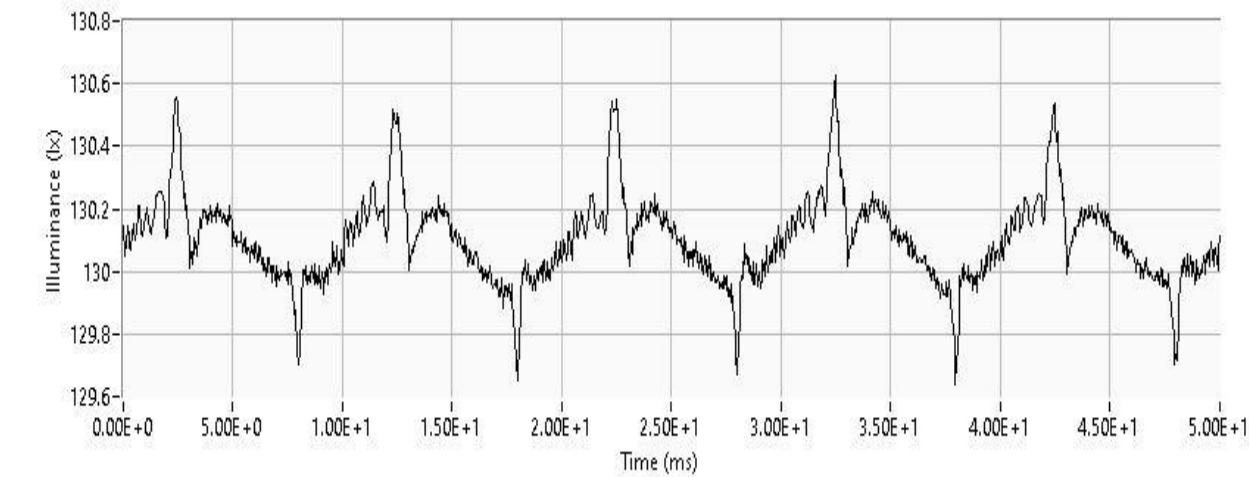


# Flicker Test Report

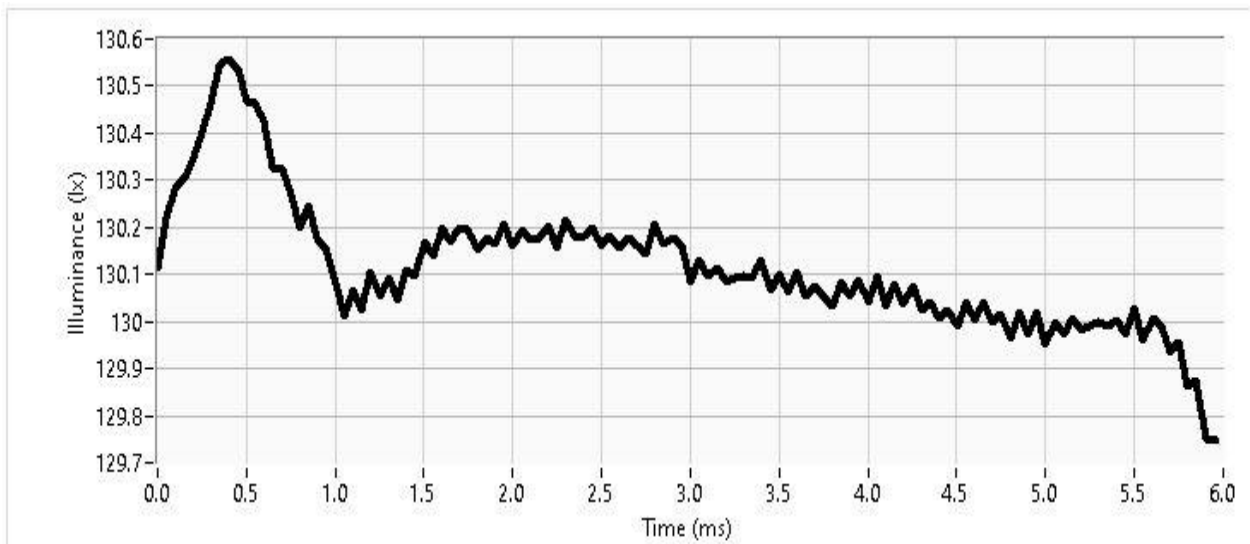
FLICKER CLASSIFICATION (IEEE 1789-2015): Risk  
SVM (IEC TR 63158): PASS (Test value: 0.005 +- 0.000, Acceptance limit < 0.9)  
Pst LM (IEC TR 61547-1): PASS (Test value: 0.023 +- 0.001, Acceptance Limit < 1.0)  
*Tolerances are evaluated by 2 x standard deviations (k=2, 95% confidence level).*



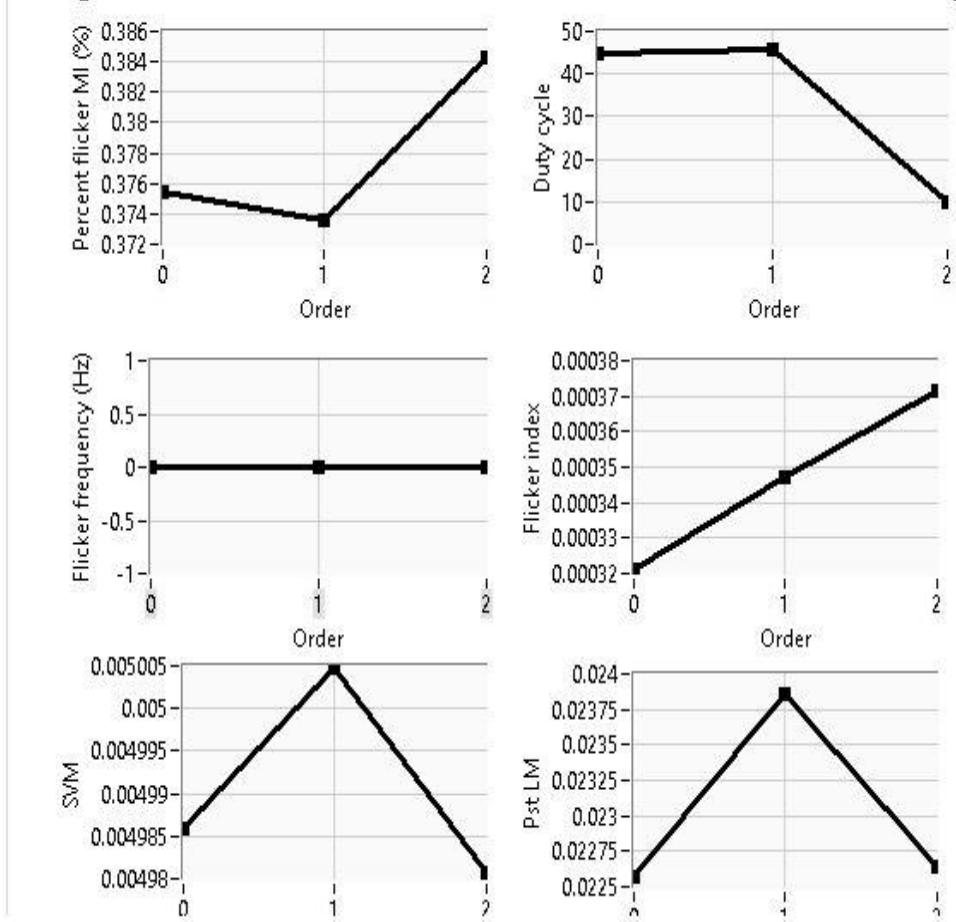
**Table. Flicker analysis summary. The values have been calculated as an average of consecutive repetition measurements.**

	Value	St.dev.
Average signal	130.10	0.01
Mean signal	130.12	0.01
Max signal	130.61	0.02
Min signal	129.62	0.01
Percent flicker (%)	0.38	0.01
Flicker index	0.0003	0.0000
Flicker frequency (Hz)	0.0	0.0
Pulse width (ms)	Inf	NaN
SVM	0.0050	0.0000
Pst LM	0.0230	0.0007

**Figure. Illuminance as a function of time in one period. The graph is calculated for the latest signal period.**



**Figures below show the data as a function of consecutive measurement repeats.**



**Figure. Modulation index (%) vs. Flicker Frequency according to IEEE 1789.**

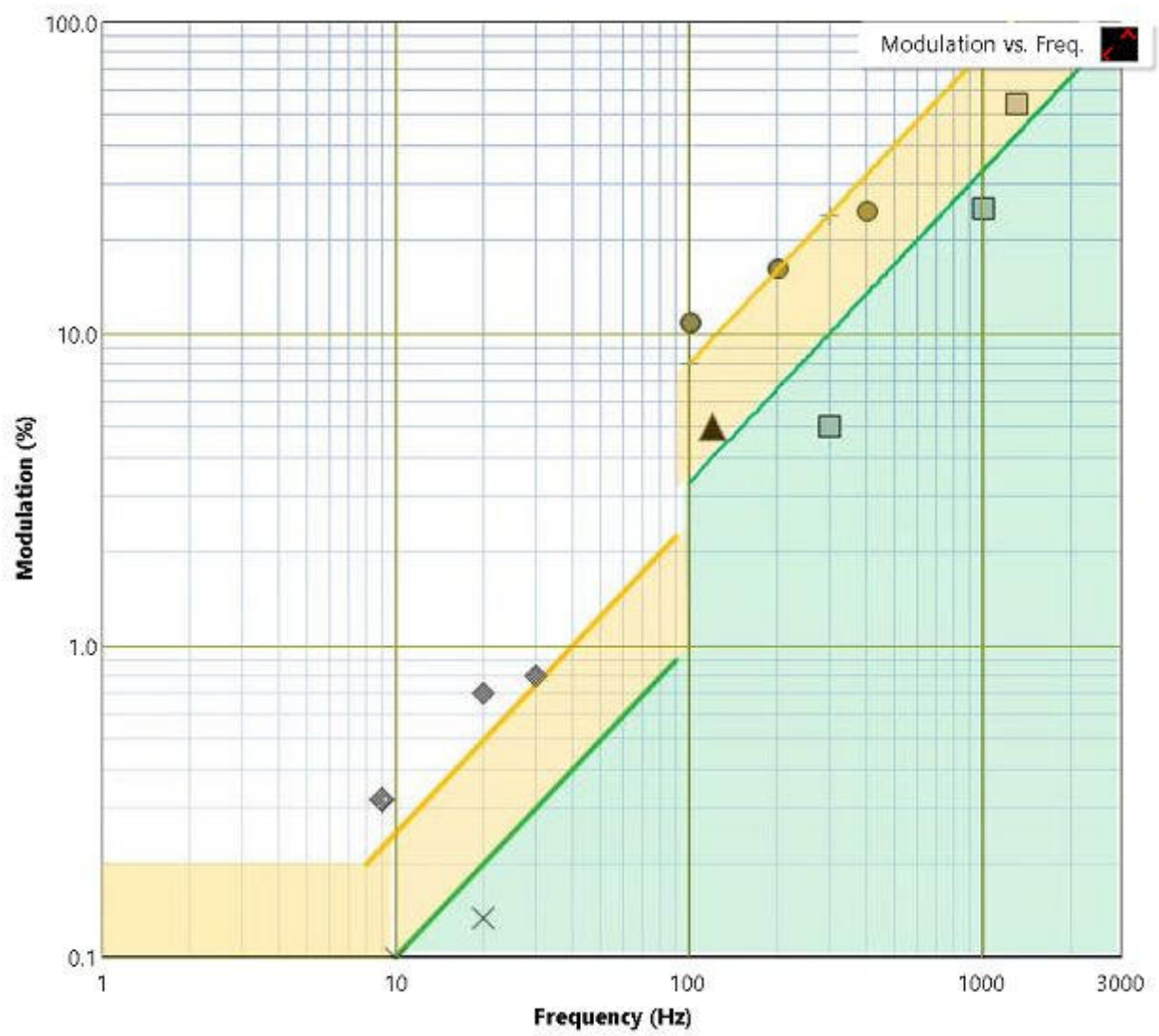


Figure. Pst\_LM long signal shape.

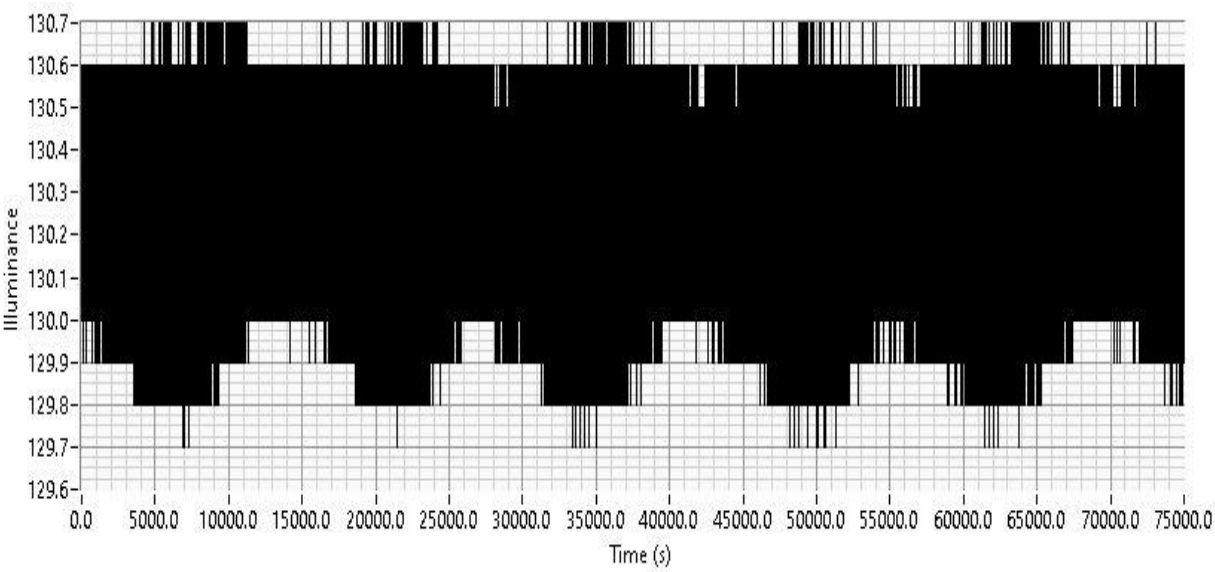


Figure. Fast-Fourier transform for frequency analysis (SVM).

